



The NETmc Marine DVR is a new concept in video acquisition; a single unit that can be upgraded in the field simply by adding a new code, it replaces all previous DVRs in our product range.

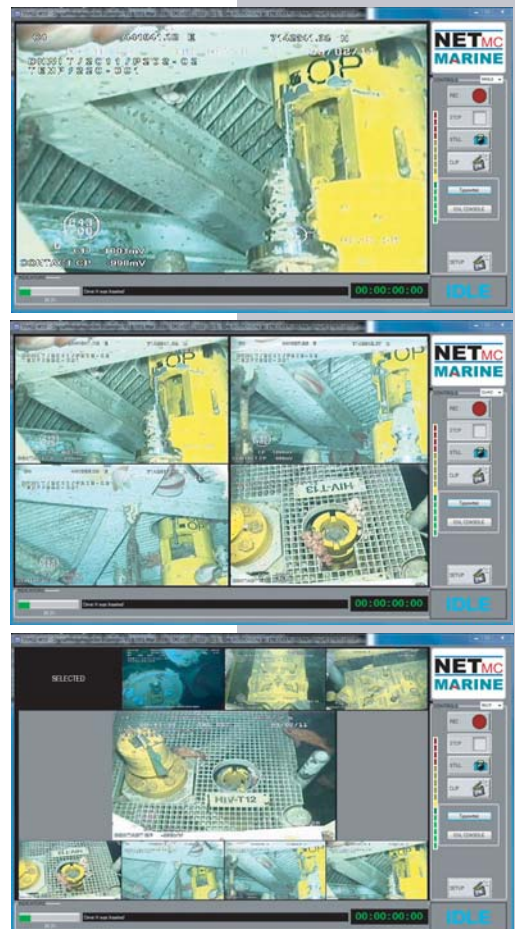
The basic configuration is a single composite channel recorder, but up to three more channels can be added as well as overlay, black box functionality and compatability with third party softwares. Imagine being able to covert a single channel unit to a full pipeline spread as easily as adding a USB device.

Other options include HD recording, compatability with the DVCi range of cameras and recording IR feeds on Coastal and Border Patrol vessels. The system can also be installed in ruggedised cases for portatbility e.g. to work with the DVCi SR.

N.B. future options may require hardware upgrades as well.



Typical GUI layouts:



Rent specific functions by the day

Upgrade on a job by job basis



DVR

System Options

Some of the upgrades available:

- multi channels
- Hi-Def input
- Video Overlay
- Blackbox recording
- Integrity Software Control (coabis / eiva)

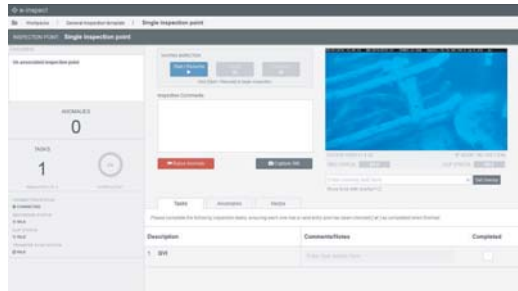
Digital Dive Log

The Digital Dive Log (DDL) is an interactive electronic dive log for use with the NETmc Marine DVR Inspector or X-Ops DVR. The software can run on the DVR itself or on a separate PC and automates the input of data normally recorded during ROV and diving operations.



E-Inspect

Stand-alone workpack driven inspection / video acquisition package - for each workpack a list of Inspection Points or groups of associated Inspection Points can be created, to which Tasks are allocated e.g. take CP



Chassis Options:



1U Rack Mount
 Base model
 configurable 1-4 channels
 composite video or single channel
 Hi-Def



4U Rack Mount
 configurable for mixed input types -
 HiDef and composite
 supports extra storage



Peli Case version
 ruggedised construction
 IP rated keyboard and connectors