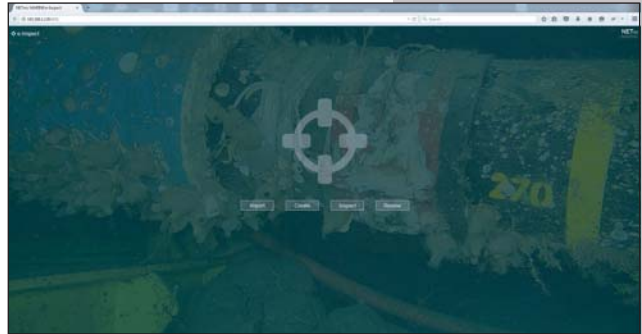


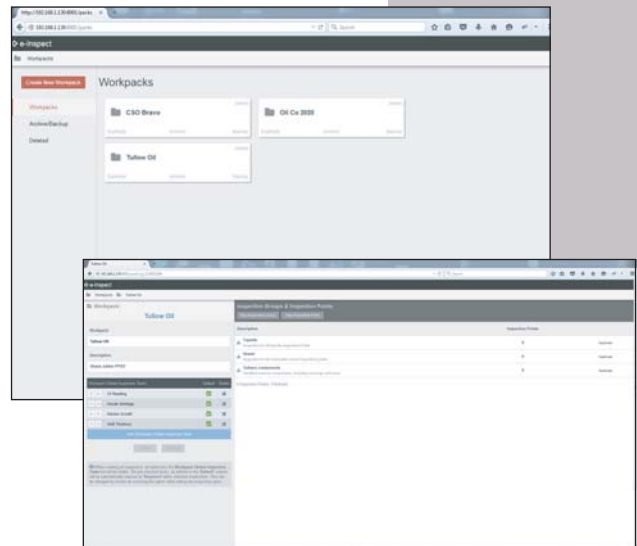
E-Inspect has been in the market since 2001, however it has recently undergone a full re-writing and upgrade of functionality. It is a stand-alone inspection/video acquisition package that requires the use of a NETmc Marine recording system, enabling the acquisition of media associated to pre-planned inspection points.

The software and hardware can either be purchased or rented individually or separately by any company and is suitable for inspecting any type of offshore structure. It is a single instance of use system, however it can be used on many different projects.



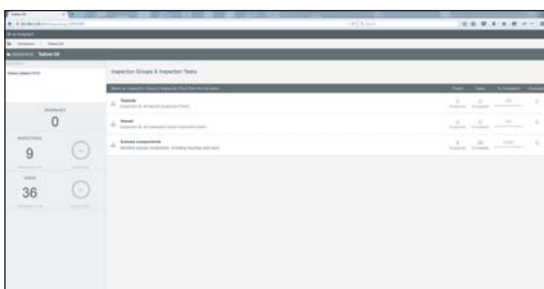
The software has simple to navigate screens which guide the operator through the configuration and data input to the control of the media. The screens are uncluttered with cells for descriptions and observations as well as entry boxes for specific criteria e.g. CP, anode wastage, marine growth etc. The attached recorder is controlled from E-Inspect, no manual operation of the recorder/camera system is required.

E-Inspect is a Workpack driven package, for each Workpack a list of Inspection Points or groups of associated Inspection Points can be created, to which Tasks are allocated e.g. take CP. As can be seen from the screen grab to the right, several Workpacks can be created e.g. for different customers or assets or locations on an asset.

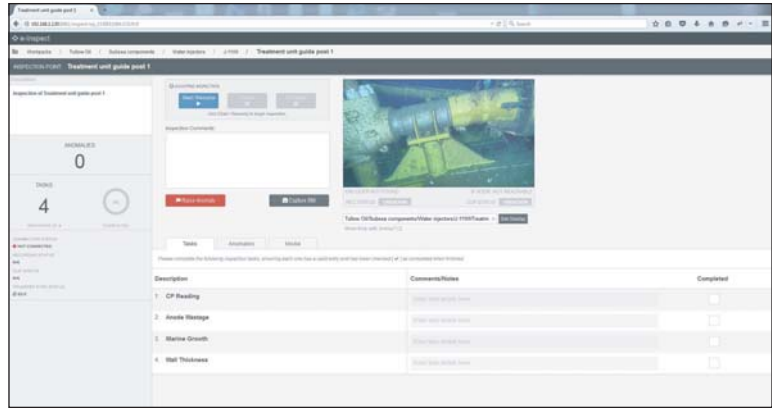


A list of Tasks can be made which will apply to every Inspection Point, however additional Tasks can be added to specific Tasks where required.

When a Workpack is selected it is easy to see the progress of the inspection from the list of Inspection Groups & Inspection Tasks

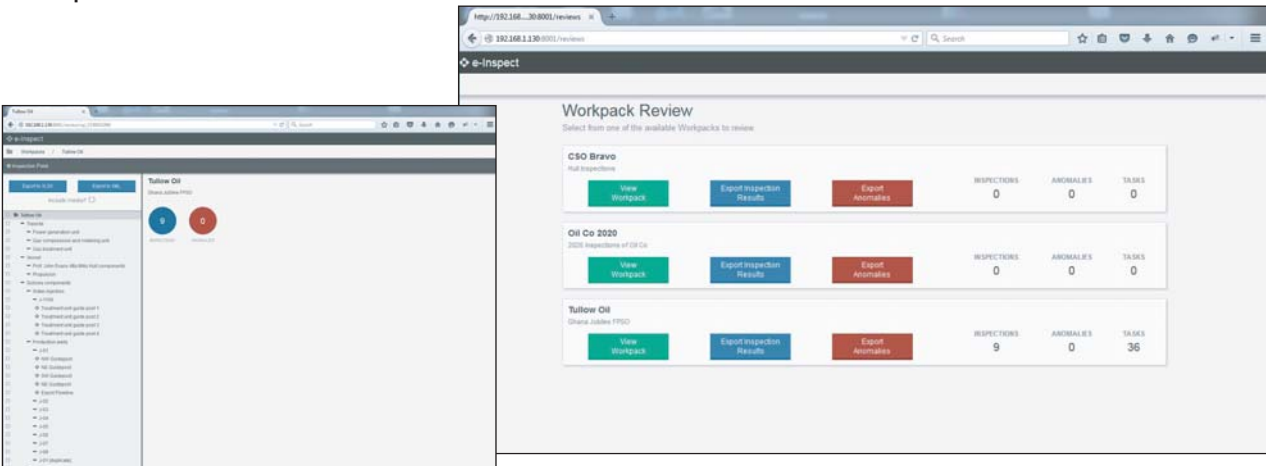


If a task is considered anomalous the operator can mark it accordingly by clicking on the "Raise Anomaly" button; there is now the ability to take Anomaly related stills and instigate a video clip.



These media are logged along with the Anomaly and automatically named after the Inspection point. These Anomalies will be available as part of the Anomaly only report but also included in the master report; both of which are in excel spreadsheet format which is the client deliverable.

After the work scope is complete all Workpacks can be reviewed to check the overall status, ensuring all Tasks have been performed, and to check for reported Anomalies.



E-Inspect generates a number of reports for the user to select as a deliverable; the Anomaly Report only has Anomalous data so the client does not have to search through hours of video footage to find the video they want. The reports are in the common Excel format.

